

PROGRIP[®]

GCX[™]

MODULAR CAM ACTION GUIDE CLAMP

SAFETY 1st



Disconnect machine from power source before making any adjustments.



Always wear proper ear protection when working with machinery.



Use caution when handling sharp objects (saw blades, router bits, drill bits and so on). Use protective gloves whenever possible.

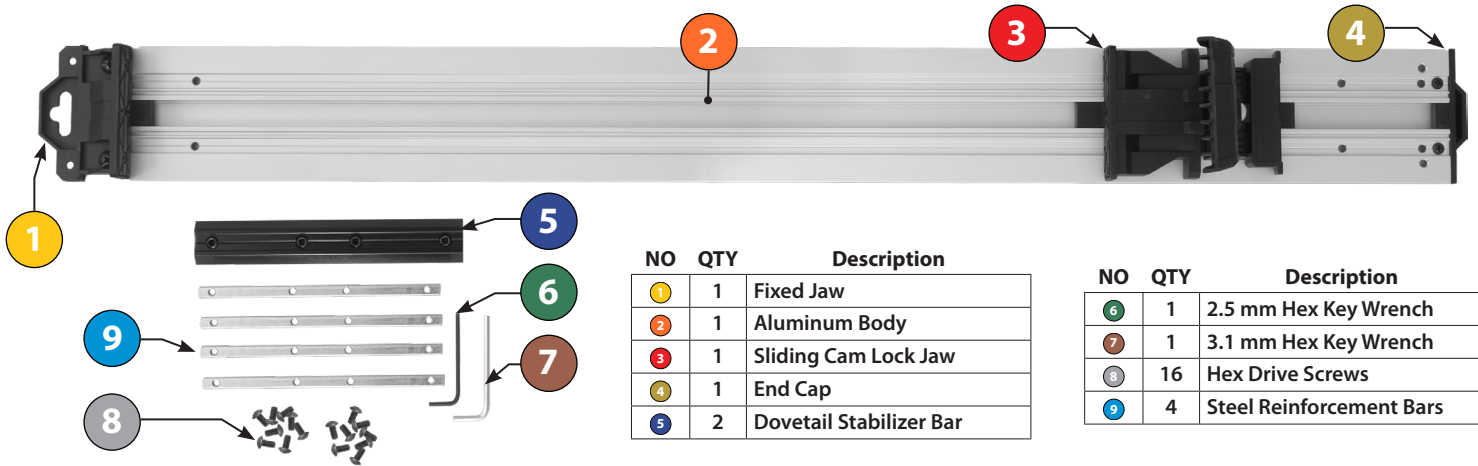


Always wear proper eye protection when working with machinery and tools.



Always wear proper respiratory protection when working near airborne dust particles.

Please read and fully understand any and all safety materials that came with your power tools or machinery before operation. Always follow all safety guidelines set in place by the power tool or machine manufacturer.



GCX Cutting Technique

Things you'll need...



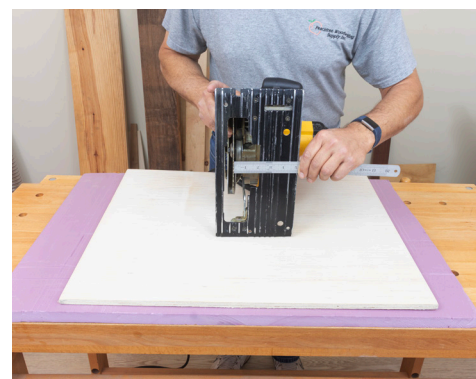
GCX Clamp, circular saw, pencil, ruler, & foam insulation board
(found at most local home stores)

Place, Measure & Mark



Measure and mark your stock where you would like to cut.

Measure for offset



Measure from the blade teeth to the edge of the saw base. Make a note of this measurement.

Mark the Offset



From your cut line, mark the offset measurement from your saw on to your stock.

Adjust the Clamp



Slide the Sliding Cam Lock Jaw far enough away from the fixed end to fit your board in between the jaws.

Align the Clamp



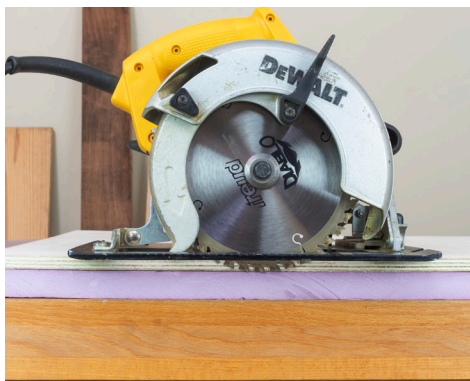
Align the clamp edge to the offset marks on your board and push the Sliding Cam Lock against the edge of your stock.

Secure the Clamp



Once properly aligned, secure the clamp to your board by pushing down on the Sliding Cam Lock lever.

Set the Saw Depth



Set the depth of your saw to be just slightly below your board as shown above.

Make the Cut

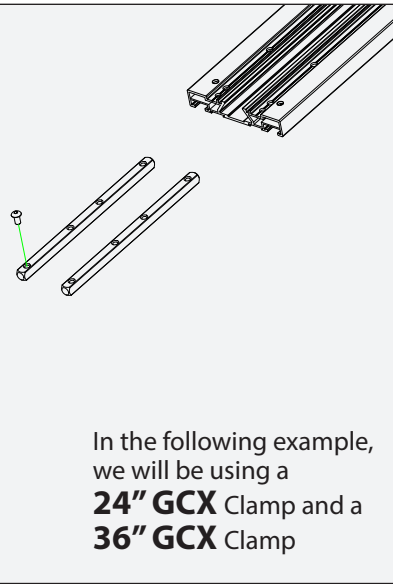


Using the GCX Clamp as your guide, plug in and power on the saw, then make the cut.

How to Attach 2 Clamps Together

Things You'll Need:

- Phillips Head Screwdriver (Not Included)
- GCX Clamp (Choice of Length)
- GCX Clamp (Choice of Length)
- 5 Dovetail Stabilizer Bar
- 9 2 Steel Reinforcement Bars
- 6 2.5 mm Hex Key Wrench
- 7 3.1mm Hex Key Wrench

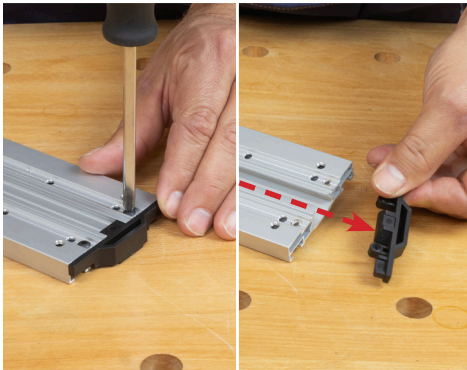


Remove Fixed Jaw



Using a phillips head screwdriver, remove the Fixed Jaw 1 on one of the clamps.

Remove End cap



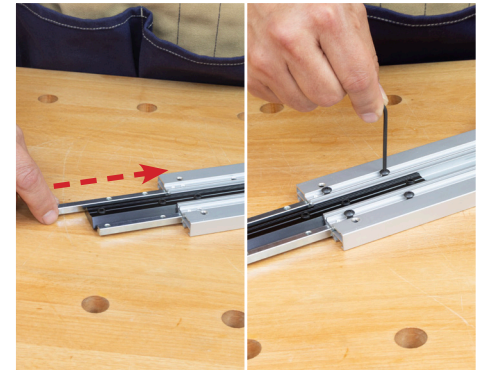
On the second clamp and using a phillips head screwdriver, remove the end cap 4.

Remove Sliding Cam Lock



Slide the Sliding Cam Lock 3 assembly out through the open end of the second clamp 2.

Insert Bars



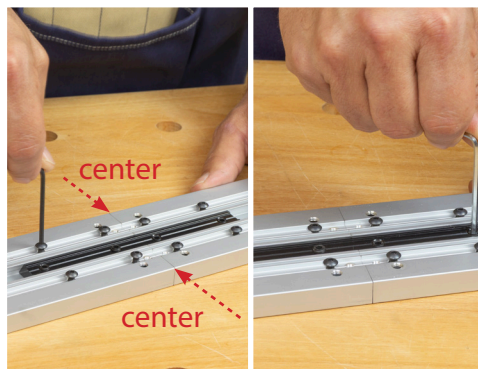
Insert the Dovetail Bar 5 and two of the reinforcement bars 9 into the open end and align with holes. Hand thread the four hex drive screws 8. Leave loose for alignment.

Join The Two Bodies



Align and insert the bars into the other aluminum body. Align the holes accordingly.

Secure Dovetail Bar and Reinforcement Bars



Thread the remaining 4 hex head screws 8 into the reinforcement bars 9 (leave loose). Center the Dovetail Stabilizing Bar 5 across the center & secure.

Time To Get To Work...



Tighten all 8 of the screws 8 in the reinforcement bars. You're now ready to use your extended clamp!

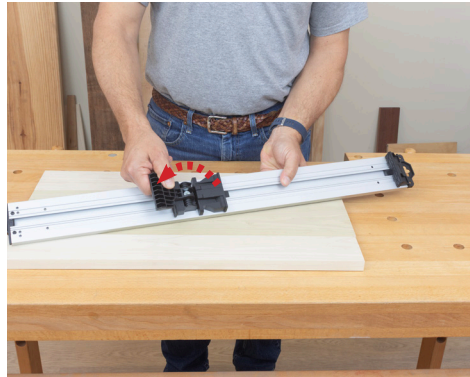
How To Use For Panel Glue Up

Dual Action Cam Lock



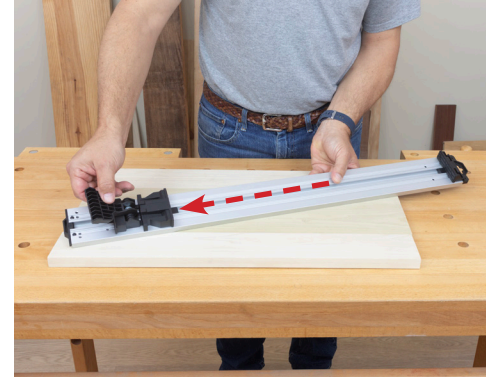
Locking the cam simultaneously engages the dovetail stabilizer and sliding cam lock jaw for excellent clamping power

To Clamp Stock...



Open the Sliding Cam Lock Jaw **3** to the unlocked **1** position

Slide Cam Assembly



Slide the Cam Lock Jaw **3** away from the fixed jaw **1** far enough so your stock will fit between the jaws.

Lay Clamps Upside Down



Flip the two clamps upside down parallel to each other as shown here. Place your glued up stock in between the jaws.

Slide Cam Assembly Against Stock



While holding the fixed jaw, slide the Sliding Cam Lock Jaw **3** firmly against the other side of your stock.

Lock Cam Assembly



While holding the clamp down, secure stock by locking **1** Sliding Cam Lock

Slide Other Cam Assembly Against Stock



While holding the fixed jaw, slide the Sliding Cam Lock Jaw **3** firmly against the other side of your stock.

Lock Other Cam Assembly



While holding the clamp down, secure stock by locking **1** Sliding Cam Lock. Allow to dry.

Shop Tip...



Use a damp cloth to keep track free from glue or debris